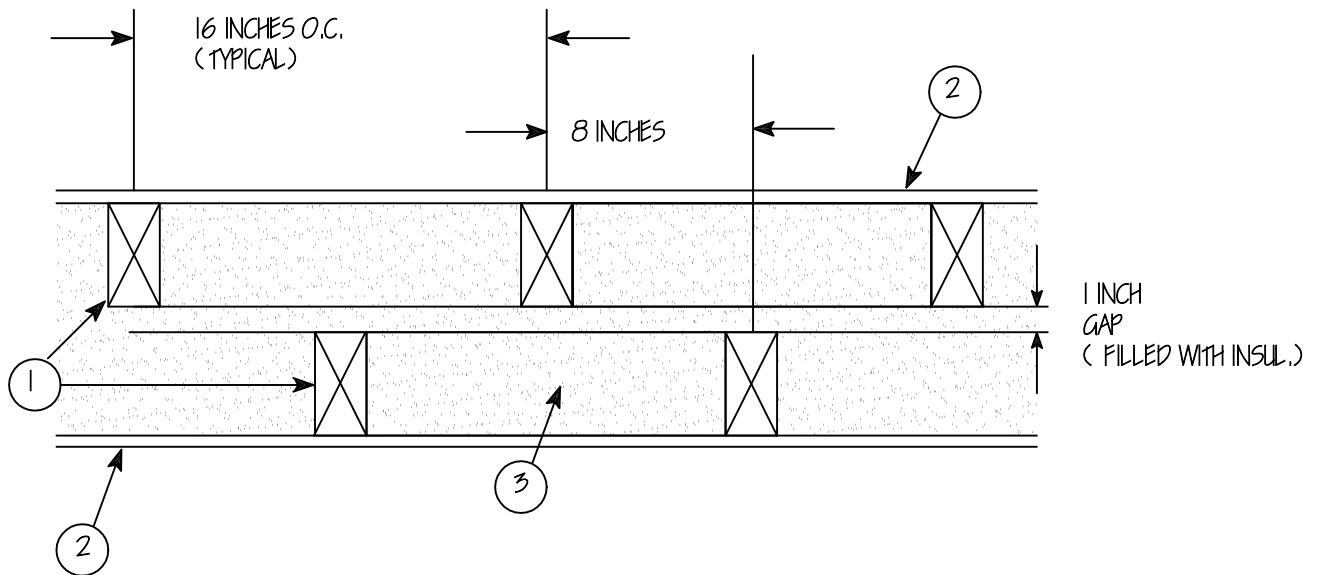


# WALL DETAILS



1. WOOD STUDS - DOUBLE ROW OF NOMINAL 2X4 INCH STUDS, SPACED 16 INCHES O.C. AND CROSS BRACED AT MID-HEIGHT. OPPOSITE ROWS SPACED 1 INCH APART, STAGGERED 8 INCHES O.C. AND JOINED AT THE TOP AND BOTTOM WITH BEARING PLATES.

2. WALLBOARD, GYPSUM - ONE LAYER OF 4 FOOT WIDE, 5/8 INCH THICK TYPE C GYPSUM WALLBOARD, APPLIED VERTICALLY AND SCREWED TO STUDS AND BEARING PLATES 7 INCHES OC WITH 1-7/8 INCH LONG CLIP HEAD DRYWALL SCREWS. WALLBOARD JOINTS CENTERED OVER STUDS.

3. FTI 2H FIREWALL - MANUFACTURED BY FIBERLITE TECHNOLOGIES, INC. - SPRAY APPLIED CELLULOSE MATERIAL. THE FIBER IS APPLIED WITH MISTED WATER TO COMPLETELY FILL THE ENCLOSED 8 INCH CAVITY IN ACCORDANCE WITH THE APPLICATION INSTRUCTIONS SUPPLIED WITH THE PRODUCT. THE MINIMUM DRY DENSITY IS 4.20 LBS/FT<sup>3</sup>.

4. BEARING PLATES - (NOT SHOWN) NOM. 2X4 INCH. TWO LAYERS ON TOP AND ONE LAYER ON BOTTOM FOR EACH ROW OF STUDS.

5. JOINTS AND SCREWHEADS - (NOT SHOWN) WALLBOARD JOINTS TAPED AND SCREWHEADS COVERED WITH JOINT COMPOUND.

6. INTERTEK TESTING SERVICES REPORT NO. 3132554-1,2 DATED NOVEMBER 29, 2007. LOAD BEARING 100% OF DESIGN LOAD UNTIL 1-1/2 HOURS, 75% DESIGN LOAD FROM 91 MIN. TO 115 MIN., AND 65% DESIGN LOAD FROM 116 TO 120 MINUTES.

## FTI 2H FIREWALL - 2 HOUR FIRE SEPARATION WALL

NOT TO SCALE:

FIBERLITE TECHNOLOGIES, INC.  
JOPLIN, MO. 64804

DATE: 19 MAR. 2008

REV. 1

DRAWN BY: DAL / TEM